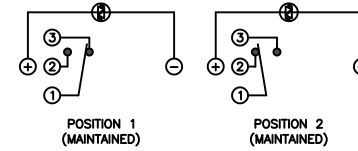


**SCHEMATIC**



**SPECIFICATIONS**

**FUNCTION:**  
1P2T ON-ON

**RATING:**  
2A 24VDC

**ILLUMINATION VOLTAGE:**  
Forward: 2.8V 20mA  
Reverse: 2.8V 20mA

**CONTACT RESISTANCE:**  
Initial: 50mΩ Max. at 1A 12VDC

**INSULATION RESISTANCE:**  
1,000MΩ Min. at 500VDC

**DIELECTRIC STRENGTH:**  
2,000VAC Min. for 1 Minute

**ELECTRICAL LIFE:**  
50,000 Cycles

**MECHANICAL LIFE:**  
1,000,000 Cycles

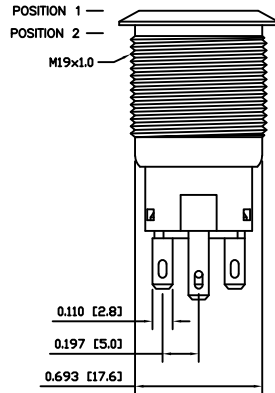
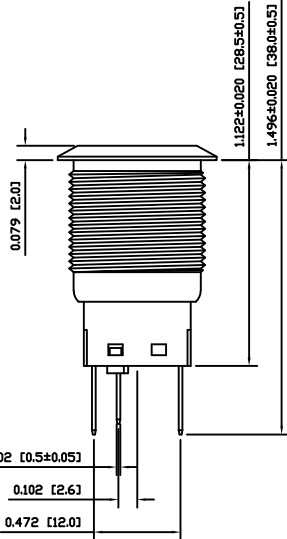
**TEMPERATURE:**  
Operating: -20°C to 70°C

**INGRESS PROTECTION:**  
IP65

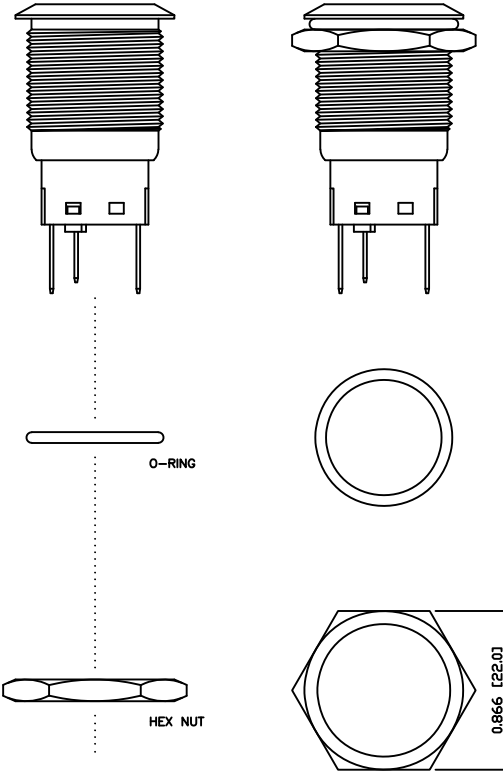
**APPROVALS:**  
**RoHS**  
COMPLIANT

A

A



POSITION 1 —  
POSITION 2 —  
M19x1.0



**EXPLODED VIEW**

**ASSEMBLED VIEW**

**MATERIALS**

**BUSHING:**  
Stainless Steel (304)

**BASE:**  
Polycarbonate (PC)  
Polybutylene Terephthalate (PBT), UL94 V-2

**ACTUATOR:**  
Stainless Steel (304)  
Polycarbonate (PC)

**HARDWARE:**  
Nickel Plated Brass (H59)

**SEALING:**  
Silicone Rubber

**INNER ASSEMBLY:**  
Polyoxymethylene (POM)  
Phosphor Bronze

**SPRING:**  
Spring Steel

**CONTACTS:**  
Silver/Cadmium Oxide (AgCdO)

**TERMINALS:**  
Silver Plated Brass (H62)  
Silver Plated Phosphor Bronze

**O-RING:**  
Silicone Rubber

**COLORS AND FINISH**

**BEZEL:**  
Stainless Steel  
Machine Finish

**ACTUATOR:**  
Stainless Steel  
Machine Finish

**ILLUMINATION:**  
White (Forward)  
Green (Reverse)

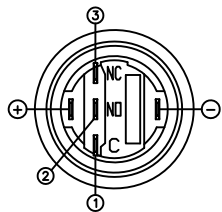
**MARKING:**  
Power Symbol (M01)

B

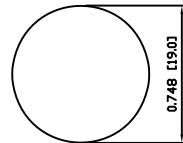
B

C

C



**SUGGESTED PANEL CUTOUT**



MAXIMUM PANEL THICKNESS: 0.433 [11.0mm]

D

D

BODY	A	09/07/24	CAB
COLORS	A	10/06/18	CAB
MATERIALS	B	09/10/16	CAB
SPECIFICATIONS	A	10/06/18	CAB
REFERENCE	REV.	DATE	BY

THE INFORMATION CONTAINED IN THIS DOCUMENT IS PROPRIETARY TO E-SWITCH AND IS NOT TO BE COPIED OR TRANSFERRED

B	UPDATED RATING TO 2A @ 24VDC	23596	10/8/18	MJR
A	NEW RELEASE	20694	8/06/12	rc
REV.	DESCRIPTION	PCR	DATE	DRAWN BY

DIMENSIONS		TITLE	
INCHES [MILLIMETERS]		PV4F230SS-3C1-M01	
GENERAL TOLERANCES		±0.008 [±0.2] / ±1'	
SCALE	PROJECTION	ITEM NUMBER	DATE
DRAWING NOT TO SCALE	1st Angle	52-PV4F230SS3C1M01	8-6-2012
			REVISION
			B

E-SWITCH

LAMB INDUSTRIES

1

2

3

4

5

6

7

8